

MANUFACTURER OF PRESSED METAL PRODUCTS—
DELIVERY WORLDWIDE, STOCKISTS ACROSS AUSTRALIA & NZ

Phone: (02) 6332 1738

22 Vale Road Bathurst NSW 2795 Australia

Please contact us for more information.

pressedtinpanels.com





Product Information

Chemical Process

All of our Aluminium products are treated with a chemical etch process which is clear, colourless, concentrated liquid acid detergent which has been formulated especially for cleaning and brightening aluminium surfaces prior to painting. Priming of sheets is recommended.

User Benefits

Simultaneous removal of light oil and grease deposits along with etching Aluminium produces a white, bright finish on aluminium sheets prior to painting or powder coating.

- Our Galvanised products are not treated with this process unless requested
- The etching is a Pre-treatment done for ease of priming and painting.
- If you have any questions on this please contact us or consult your local paint specialist.
- The only preparation we recommend prior to painting is to wipe with a clean cloth and methylated spirits to help remove finger marks and apply a light coat of primer.

Panel Sizes

Most wall and ceiling panels are available in approximately: 600 x 1800mm and 900 x 1800mm.

Some panels are available in 600 x 600mm. Ask your distributor or visit our website for details.

Borders and cornices are available in approximately 1800mm lengths.

Order Free Samples

You can order up to 3 sample panels via our website:

<http://pressedtinpanels.com/request-view-samples>

Surface scratches may be present, painting recommended.

All sheet sizes are approximate.

If you have any questions please feel free to contact the store of purchase or Pressed Tin Panels® directly.

Installation

Generally we recommend a product similar to Liquid Nails (Industrial glue) and Pop rivets or Wall Board nails to fix your panels to the wall.

Pressed Tin Panels® pressed metal products allow an over-lap join. The pattern then runs continuously along the wall or ceiling without a double-up impression.

Download Installation Guides

Installation guides are available for download from our website:

<http://pressedtinpanels.com/permalinktbc>

<http://pressedtinpanels.com/permalinktbc>

<http://pressedtinpanels.com/permalinktbc>

<http://pressedtinpanels.com/permalinktbc>

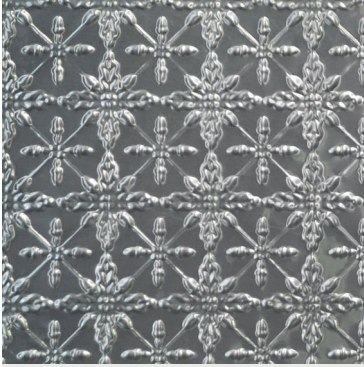
<http://pressedtinpanels.com/permalinktbc>

<http://pressedtinpanels.com/permalinktbc>

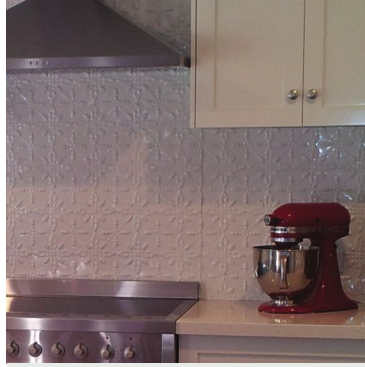




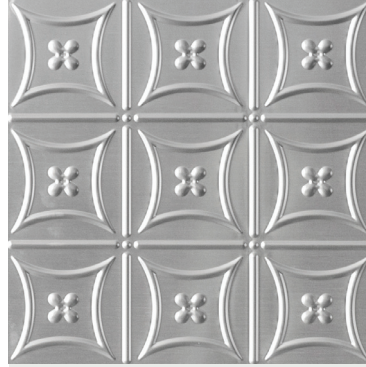
High repeat designs (50-200mm pattern repeat)



Acorn
(152mm x 152mm repeat)



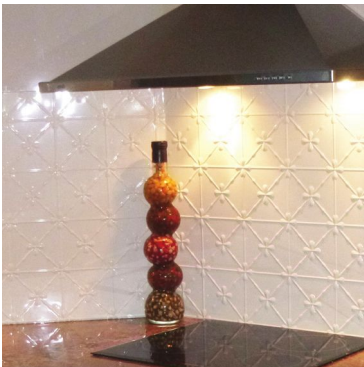
Acorn—kitchen splashback



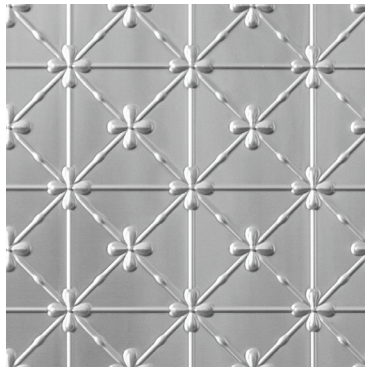
Carnavalé
(152mm x 152mm repeat)



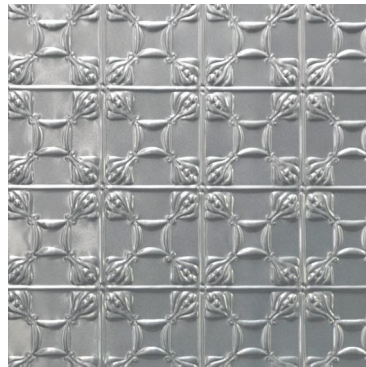
Carnavalé—powder coated in
Interpon—White Satin



Clover—kitchen splashback



Clover
(152mm x 152mm repeat)



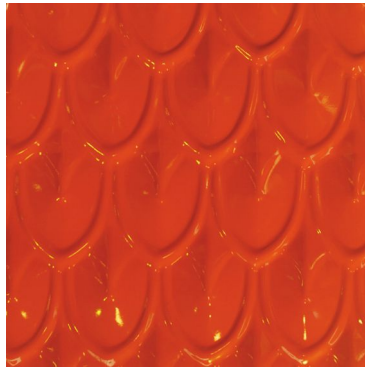
Evans
(152mm x 152mm repeat)



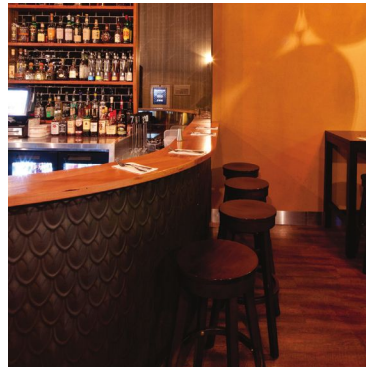
Evans—splashback powder
coated in Mercury Silver



Fish Scale—di Rosa Cabinetry
& Furniture KiwiCaravan



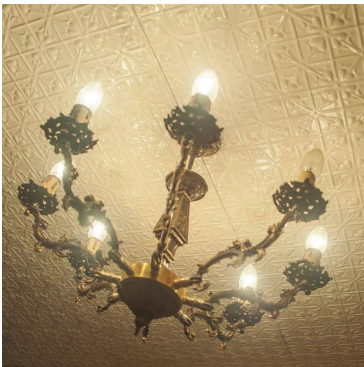
Fish Scale—powder coated
(85mm x 175mm repeat)



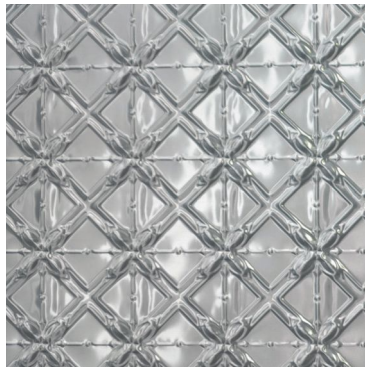
Fish Scale—bar-front



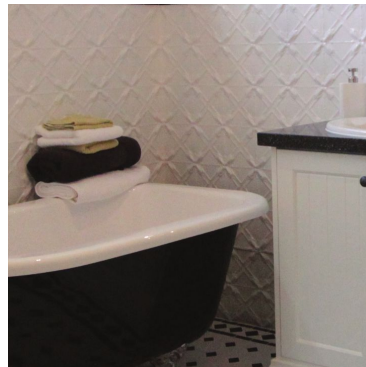
Lachlan Hearts
(152mm x 152mm repeat)



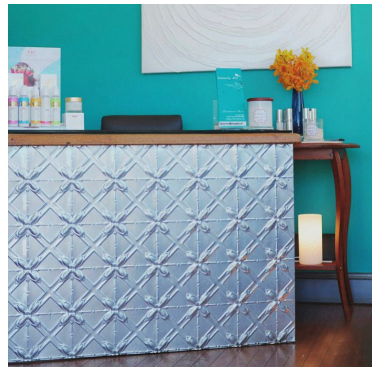
Lachlan Hearts—ceiling



Lattice
(152mm x 152mm repeat)



Lattice—bathroom

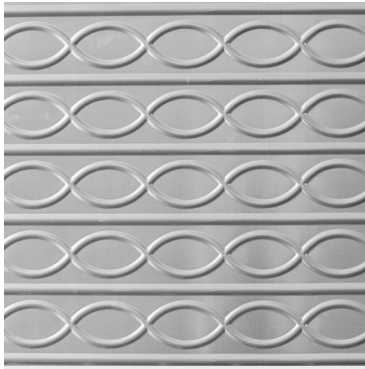


Lattice—counter-front

- Suitable for ceilings, feature walls, dado wall linings, splashbacks, cupboard door inserts.



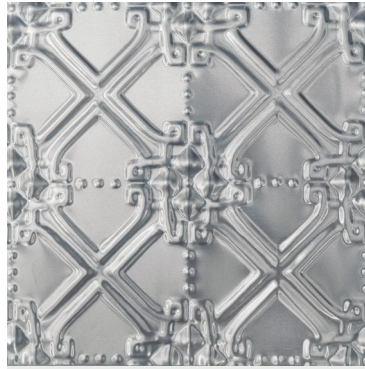
High repeat designs (50-200mm pattern repeat)



Links
(100mm x 107mm repeat)



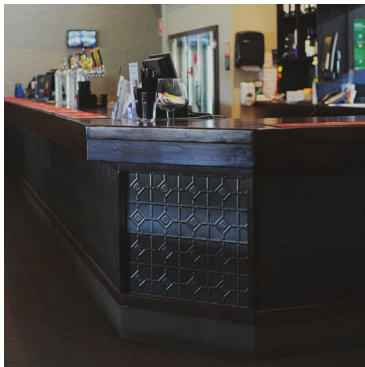
Maze—kitchen splashback
powder coated in Flame Red



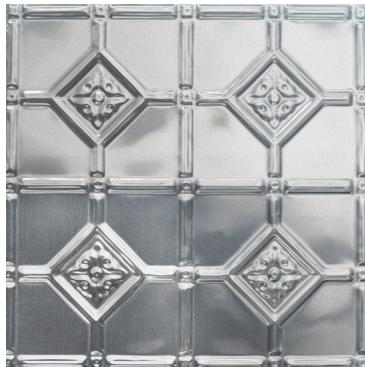
Maze
(152mm x 152mm repeat)



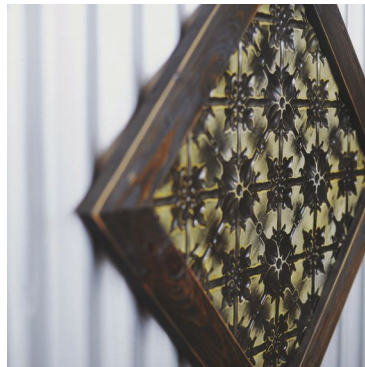
Mudgee—bathroom wall
powder coated in Shoji White



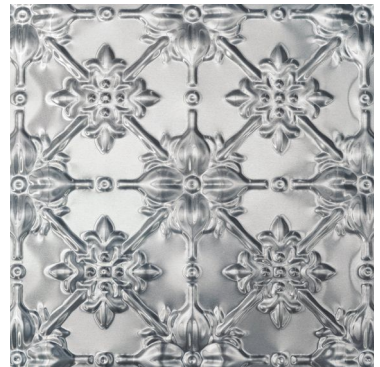
Mudgee—bar-front powder
coated in Sable Asteroid



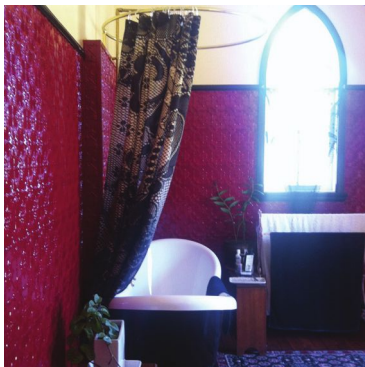
Mudgee
(152mm x 152mm repeat)



Original—framed counter-front
using reverse side



Original
(152mm x 152mm repeat)



Original—bathroom wall with
Barbers Pole border



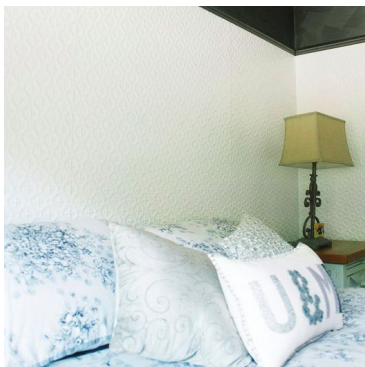
Ophir
(204mm x 204mm repeat)



Savannah
(152mm x 152mm repeat)



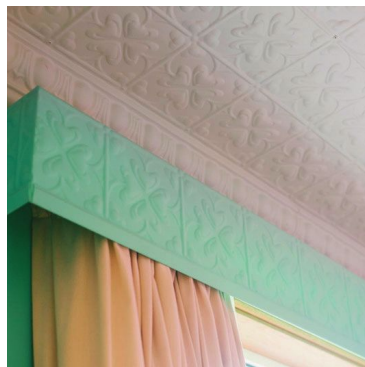
Savannah—powder coated in
Old Pewter



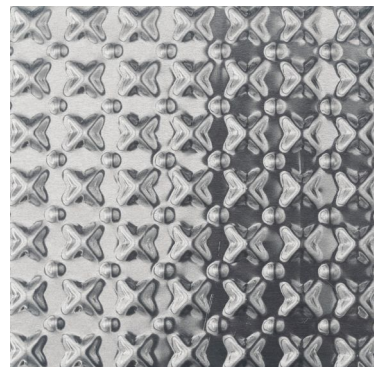
Savannah—bedroom feature
wall in White



Spades
(152mm x 152mm repeat)



Spades—ceiling and pelmet
with Egg Darte cornice



Stars
(152mm x 152mm repeat)

■ Suitable for ceilings, feature walls, dado wall linings, splashbacks, cupboard door inserts.



Medium repeat designs (200-300mm pattern repeat)



Art Deco
(306mm x 306mm repeat)



Beresford
(305mm x 305mm repeat)



Bondi—shower powder
coated in Mercury Silver



Bondi
(305mm x 305mm repeat)



Brick
(64mm x 217mm repeat)



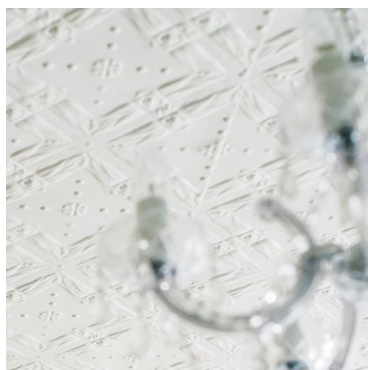
Brick—splashback powder
coated in Mercury Silver



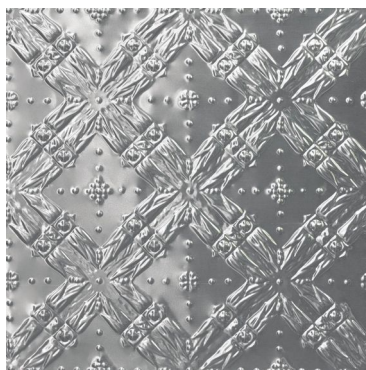
Carousel
(310mm x 310mm repeat)



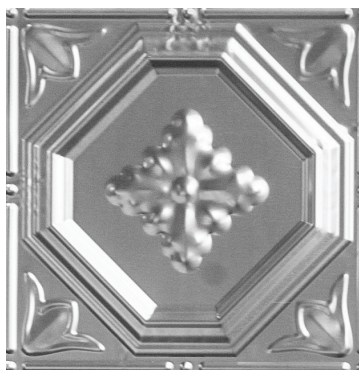
Carousel—king size bedhead



Golden Bay—ceiling in white



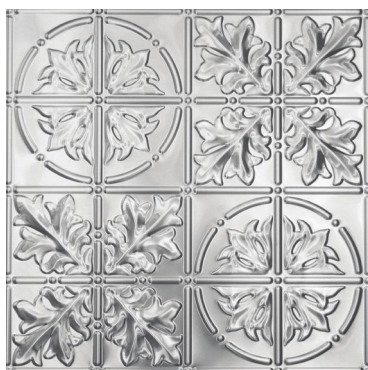
Golden Bay
(310mm x 310mm repeat)



Harris
(304mm x 304mm repeat)



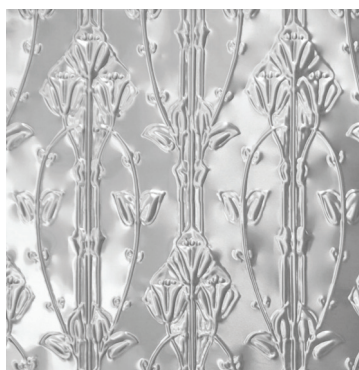
Illusion
(303mm x 303mm repeat)



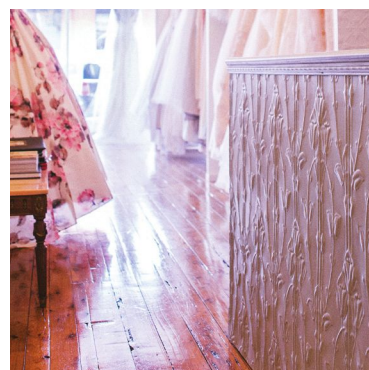
Large Maple
(314mm x 314mm repeat)



Large Maple—kitchen ceiling



Lily
(305mm x 920mm repeat)

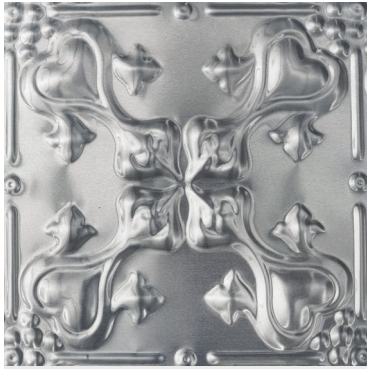


Lily—retail counter-front

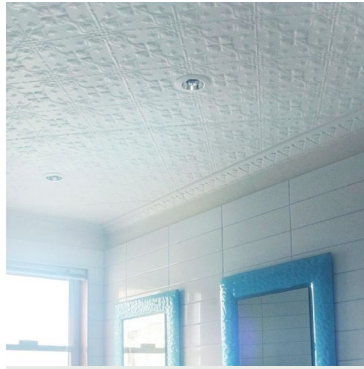
■ Suitable for feature walls, ceilings, dado wall linings, splashbacks, bar-fronts.



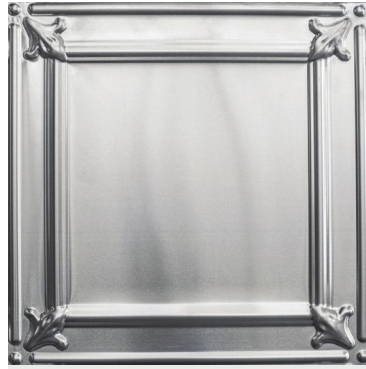
Medium repeat designs (200-300mm pattern repeat)



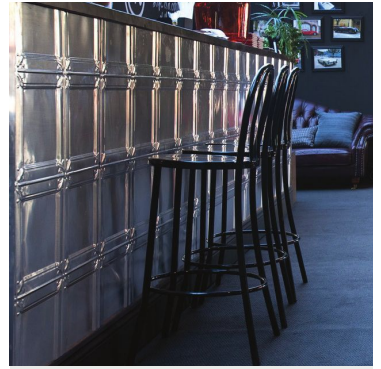
Lizards—bathroom ceiling with Bondi cornice—White



Lizards—bathroom ceiling with Bondi cornice—White



Maddington
(305mm x 305mm repeat)



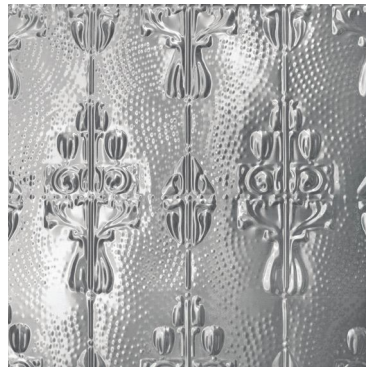
Maddington—restaurant bar-front in Silver



Melbourne
(304mm x 304mm repeat)



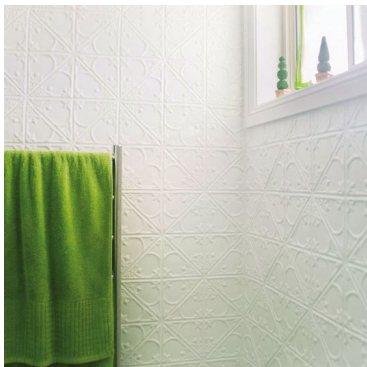
Melbourne—dado wall



Posy
(305mm x 610mm repeat)



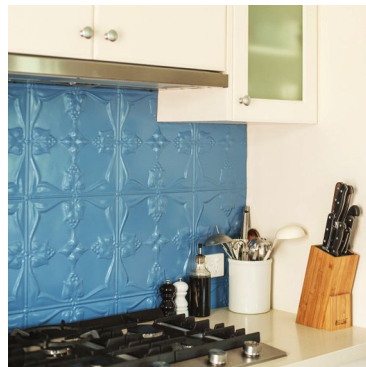
Posy—counter-front with dry brush paint technique



Snowflakes—bathroom powder coated in Pearl White



Snowflakes
(305mm x 305mm repeat)



Tulip—splashback powder coated in Wedgewood Blue



Tulip
(305mm x 305mm repeat)

Making it last

To clean your powder coated surface:

1. Carefully remove any loose deposits with a wet sponge.
2. Use a soft, non abrasive brush or cloth, and a mild household detergent solution to remove dust, salt and other deposits.
3. Rinse off with a clean fresh wet cloth.



Wall Panel—kitchen splashback powder coated in Shoji White



Wall Panel
(305mm x 620mm repeat)

- Suitable for feature walls, ceilings, dado wall linings, splashbacks, bar-fronts.



Large repeat designs (600mm pattern repeat)



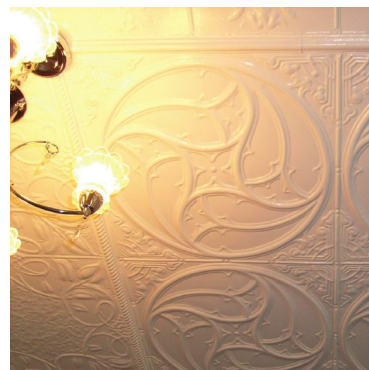
Alexandria
(610mm x 610mm repeat)



Alexandria—ceiling with Small Plain
Border & Small Rough Cast Infill



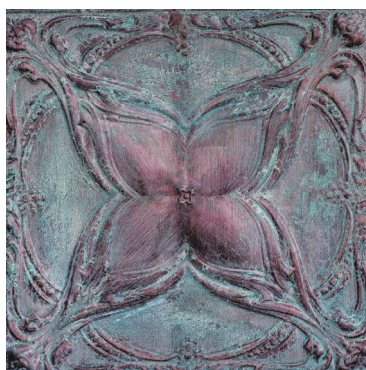
Balmain
(610mm x 610mm repeat)



Balmain—ceiling in white gloss



Charlton
(610mm x 610mm repeat)



Charlton—Porters Paint Liquid
Copper and Patina Green



Forbes
(610mm x 610mm repeat)



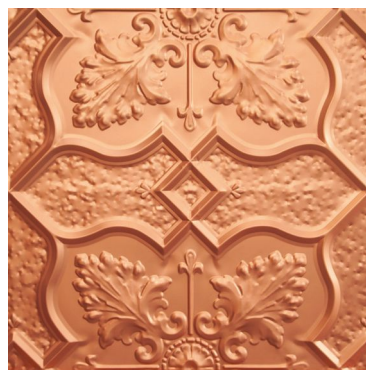
Iris
(610mm x 610mm repeat)



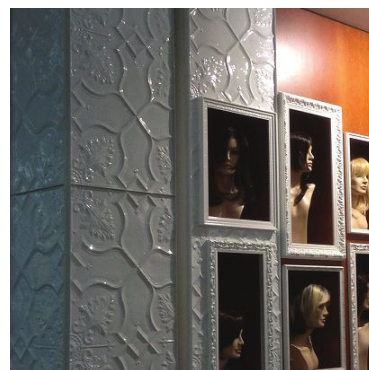
Lotus
(617mm x 617mm repeat)



Shield
(610mm x 610mm repeat)



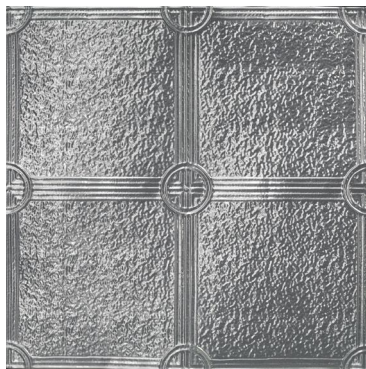
Shield—Copper
(610mm x 610mm repeat)



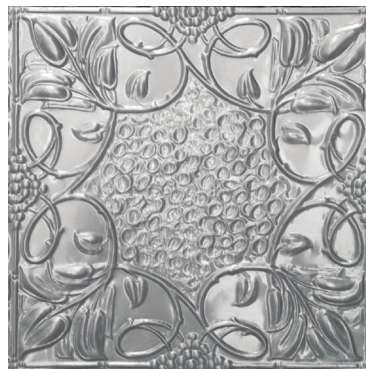
Shield—retail exterior in White



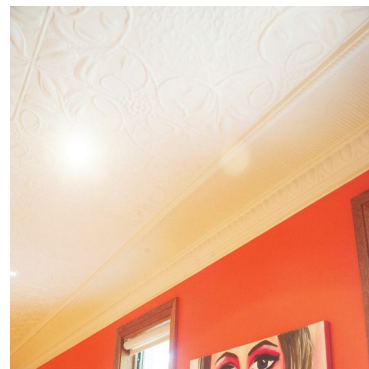
Temora
(610mm x 610mm repeat)



Victoria
(455mm x 455mm repeat)



Vines
(610mm x 610mm repeat)



Vines—ceiling with Egg Darte
cornice

■ Suitable for feature walls, ceilings, awnings, dado wall linings, art features



Dado Panels



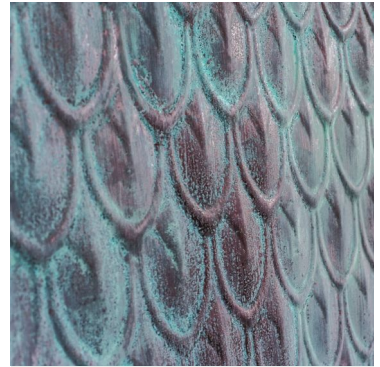
Art Nouveau
(305mm x 920mm repeat)



Art Nouveau—bathroom dado
in white



Fish Scale
(85mm x 175mm repeat)



Fish Scale—Liquid Copper
& Patina Green Porters Paint



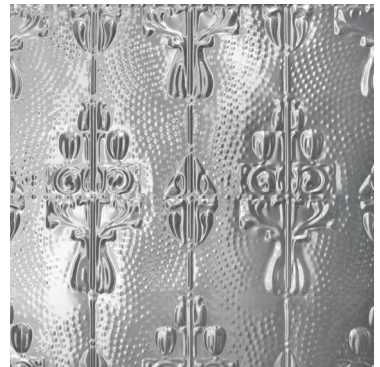
Lily—Dado in white



Lily
(305mm x 920mm repeat)



Links
(100mm x 107mm repeat)



Posy
(305mm x 610mm repeat)

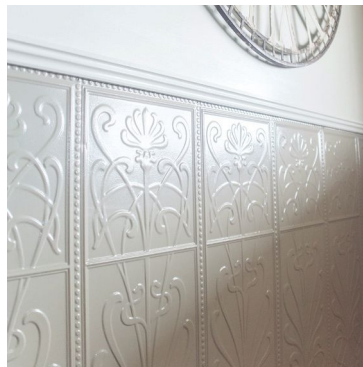
Colour Your World

Be amazed by the transformation when colour is applied to Pressed Tin Panels® products. Colour speaks its own language. It can say a lot about you and your project. Colour adds emotion, excitement and flair to any structure, defining the space and complementing the environment where it is used.

We are proud to be able to recommend and supply panels finished with Dulux Powder Coating.

Powder coating provides a sealed finish when used on Pressed Tin Panels® products making them suitable for wet areas such as kitchen splashbacks and bathroom wall linings.

ORDER A DULUX COLOUR SELECTOR TODAY
Simply follow the links on our website:
pressedtinpanels.com



Wildflower—dado powder
coated in Dune



Wildflower
(304mm x 925mm repeat)



Wall Panel
(305mm x 920mm repeat)

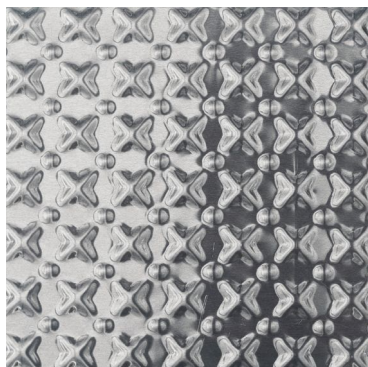


Wall Panel—dado powder
coated in White Birch

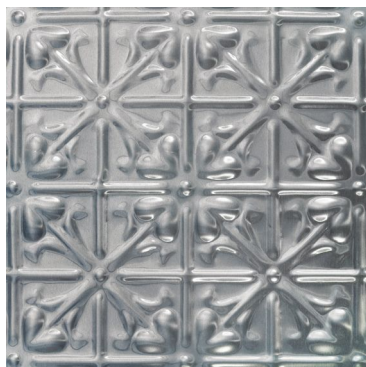
■ Suitable for dado panelling and feature walls



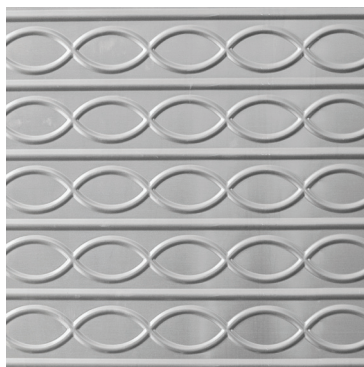
Filler Panels



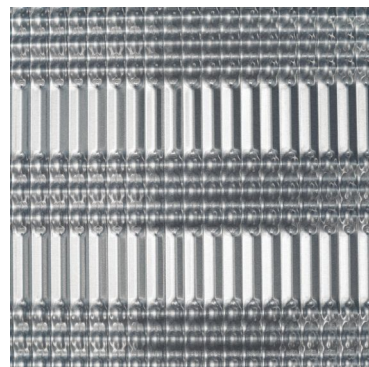
Stars
(152mm x 152mm repeat)



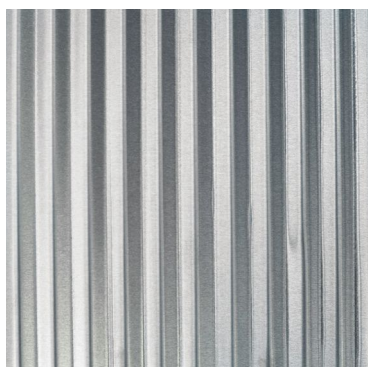
Lachlan Hearts
(102mm x 102mm repeat)



Links
(100mm x 107mm repeat)



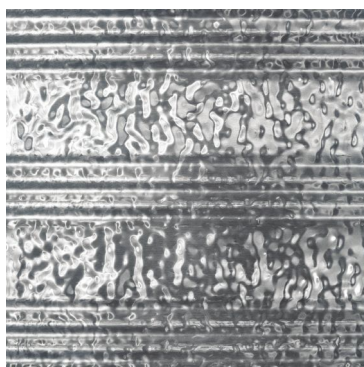
Liquorice Allsorts
(152mm x 152mm repeat)



Ripple
(152mm x 152mm repeat)



Ripple—ceiling infill with Egg & Dart Cornice



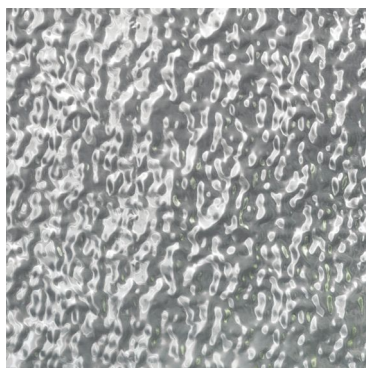
Rocky Road
(152mm x 152mm repeat)



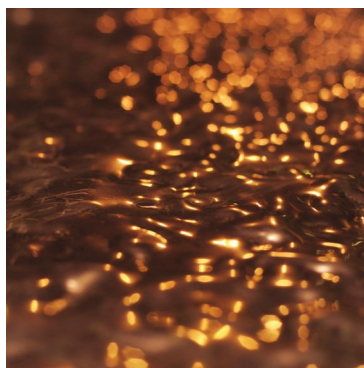
Small Rough Cast—ceiling infill with Small Grate Cornice & Small Plain Border



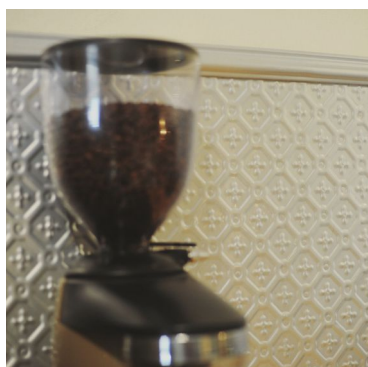
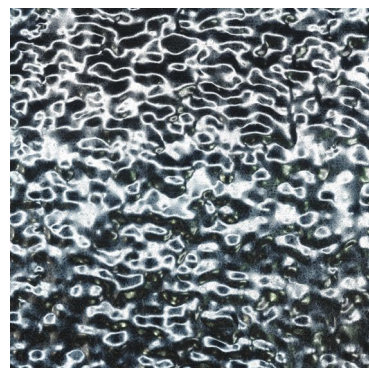
Rough Cast Small
(305mm x 305mm repeat)



Rough Cast Large
(152mm x 152mm repeat)



Rough Cast Large in Copper



Savannah—retail counter-top splashback

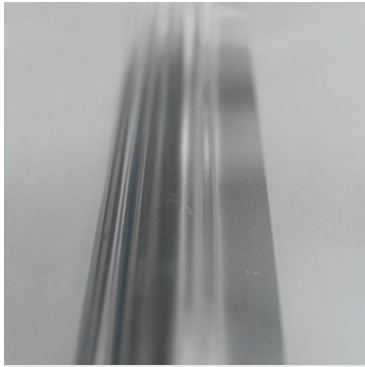
Not just traditional

Pressed Tin Panels® specialises in the Reproduction of the Wunderlich ceiling and wall panels, cornice and borders however, they need not be limited to a traditional look. Depending on their application and colour panels can look extremely modern.

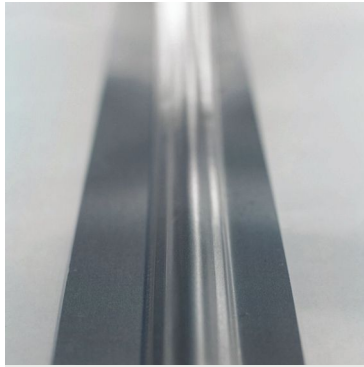
- Suitable for areas between panels and borders, panelling small areas, cupboard door panels and much more



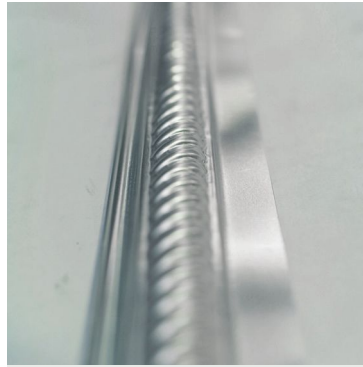
Borders



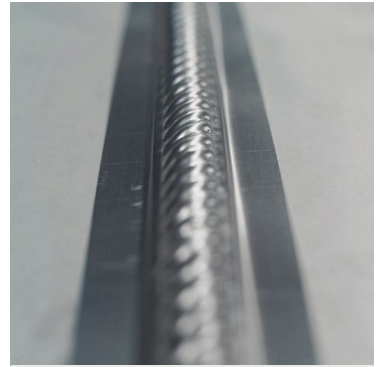
Border Small (Under Over)



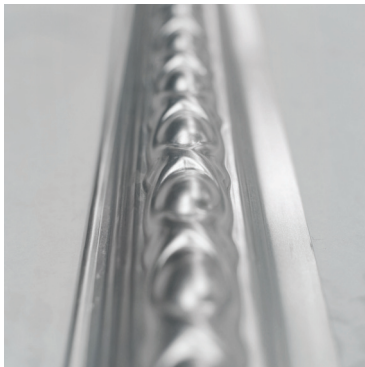
Border Small (Under Under)



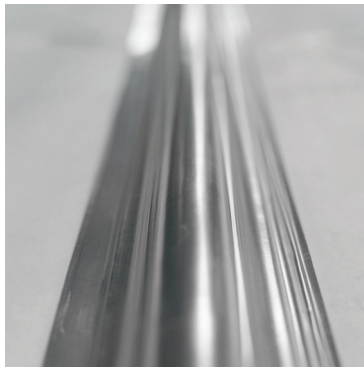
Barbers Pole (Under Over)



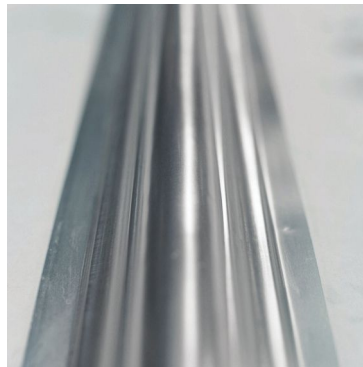
Barbers Pole (Under Under)



Egg Border (Under Over)



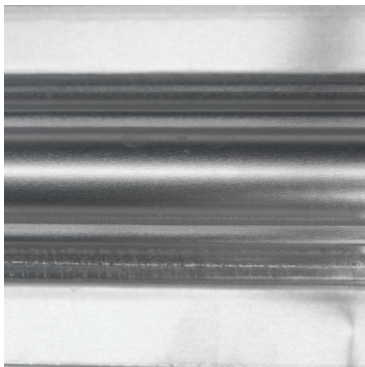
Large Plain Border (Under Over)



Large Plain Border (Under Under)



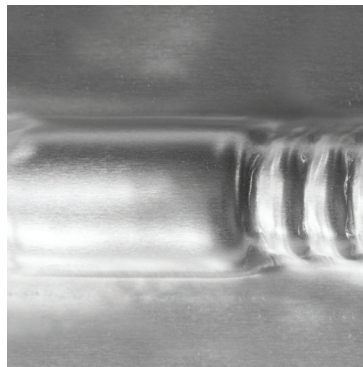
Combo Border



Border Deep (Under Under)



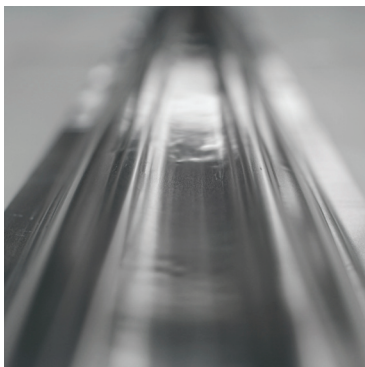
Wattle Border (Under Over)



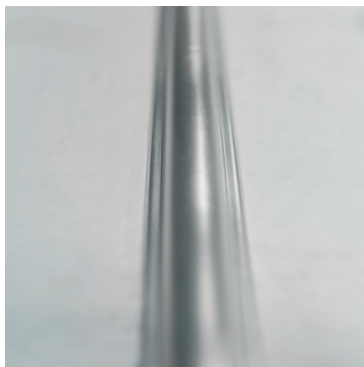
Beads Border (Under Under)



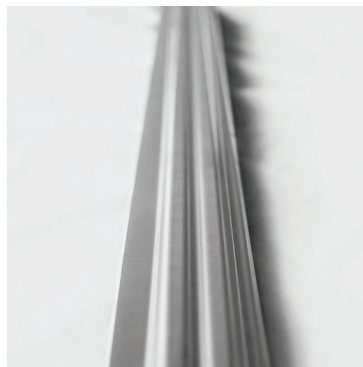
Beads Border (Trimmed/
Flexible)



Large Double Sided Border



Cover Strip Small



Double Swage Border (Under Over)



Greek Scroll Border

■ Use borders to frame your ceiling panels, top off a dado rail or splashback. Available in 1800mm lengths.



Cornices



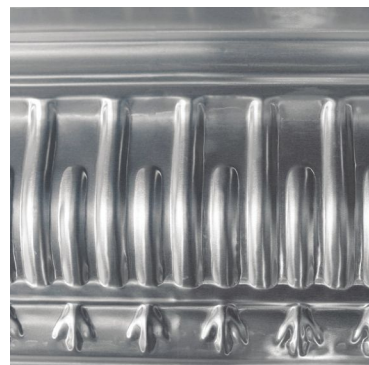
Peacock Cornice



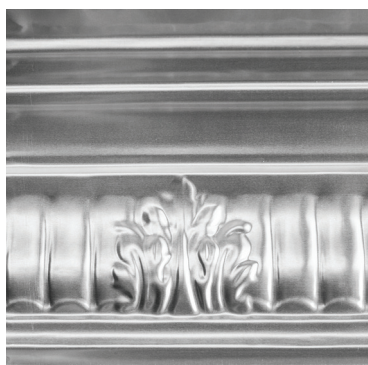
Georgian Cornice



Ella May Cornice



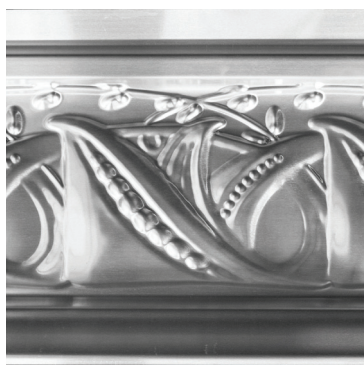
Piano Cornice



Maple Cornice



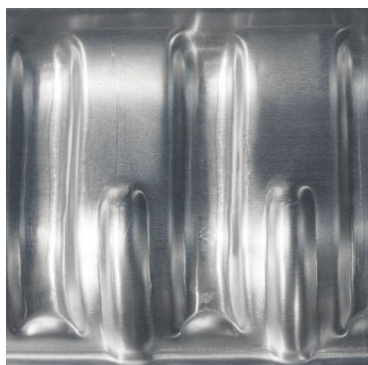
Egg & Grape Cornice



Macquarie Cornice



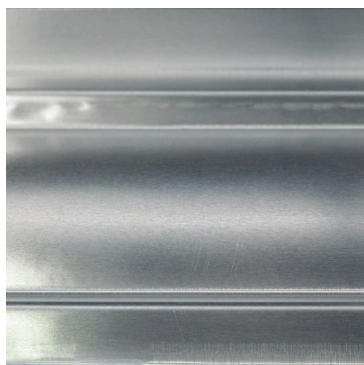
Gallipoli Rose Cornice



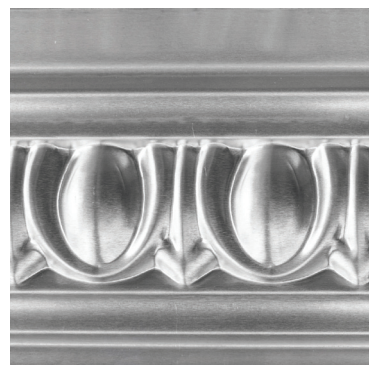
Large Grate Cornice



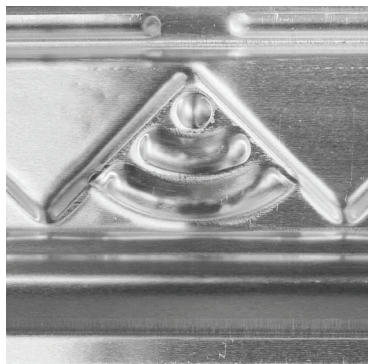
Egg & Dart Cornice



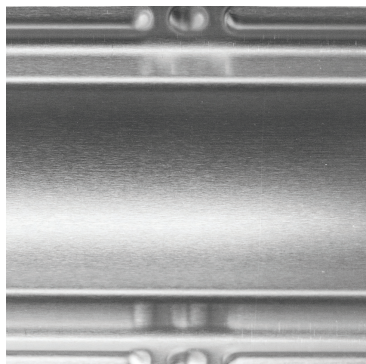
Large Plain Cornice



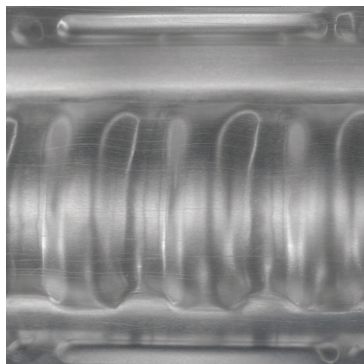
Small Egg & Dart Cornice



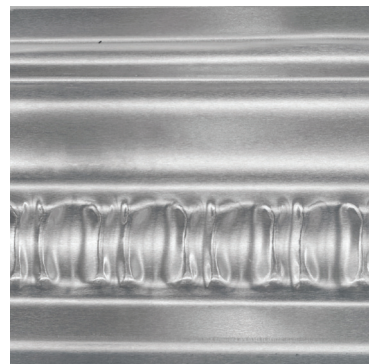
Bondi Cornice



Small Plain Cornice



Small Grate Cornice



Beresford Cornice

■ Complete your new feature ceiling with one of our spectacular Cornices. Available in 1800mm lengths.

Stunning DIY Bedhead Packs are now available

PACK CONTENTS:

- 1 x Panel of your choice
- 1 x full length Border
- 2 x half length Borders
- 1 x full length Cornice
- Mounting Strips
- 2 x smaller lengths of Cornice Mounting Strip
- 2 x corner rosettes
- 1 x pack of 20 nails

YOU WILL NEED:

- Plywood/MDF & Timber lengths cut to size
- Marking pen
- Tin snips
- Liquid nails
- Wooden moulding tools
- Hammer
- Drill & suitable screws



Why Pressed Tin Panels®?

Benefit from the most knowledgeable, passionate, experienced team. We can provide you with the highest quality Australian made pressed metal products available, as well as helpful and friendly after sales service.

Pressed Tin Panels® are available from:

