



## GENERAL INSTALLATION INSTRUCTIONS FOR WET AREAS/SHOWER RECESS

[www.pressedtinpanels.com](http://www.pressedtinpanels.com)

All wet areas need to be prepared as per Australian wet area standards.

Pressed Tin Panels will not be held responsible for the incorrect installation or incorrect waterproofing of any area.

**POWDER COATING PRIOR TO INSTALLATION IS RECOMMENDED FOR ALL PRESSED TIN PANELS BEING USED IN ANY WET AREA. THIS ENSURES A SEALED, EASILY CLEANED SURFACE.**

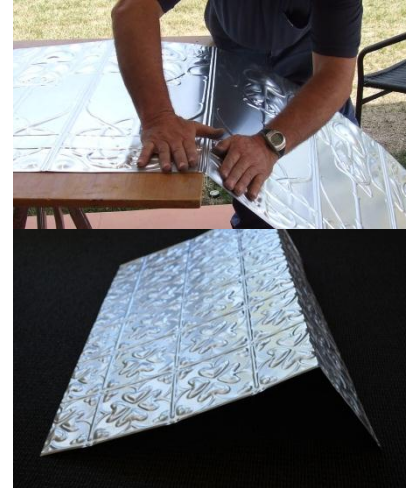
**A FEW TIPS TO HELP ALONG THE WAY:** All panels need to be semi fitted and cut to appropriate size prior to installation, this also involves the cutting of tap holes etc, if this can be done prior to powder coating this can be an advantage. We recommend the folding of panels into corners, as this ensures a tight seal, overlapping top panels OVER the bottom ones, silicon sealing joints as you go, along with the rivets and Tap holes.

**TOOLS REQUIRED:** Hammer or Pop Rivet gun, sealed pop rivets, Liquid Nails/Selleys 3in1 adhesive (one tube per panel), tin snips, Angle Grinder with aluminium cutting disc, Scribe, straightedge, clamps, Rotary Tool Kit or Drill and snips for cutting tap holes etc, Silicon, soft cloth.

**STEP 1.** Ensure the entire has been water proofed and is free from any loose debris and dust.

**STEP 2.** The panels need to be semi fitted and cut and folded to appropriate sizes prior to installation, this is much easier than ending up with a gluey mess! Folding of the panels into corners is paramount for a watertight finish, this can be achieved in a sheetmetal folder or onsite with a scribe, straight edge and clamps with manual manipulation to achieve the fold.

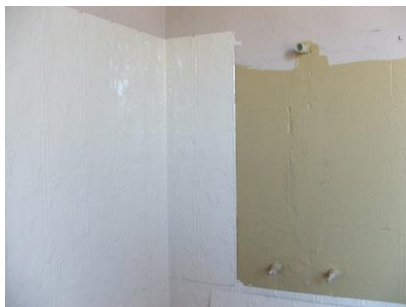
**STEP 3.** Keep moving around the shower area working from the bottom up, setting up, marking and cutting panels as you go, remembering to overlap joints correctly when marking. Once you are happy with the layout of your pieces you are ready to commence installation.



**STEP 4.** Begin with the first panel chosen and place adhesive all over the reverse side of the panel, place against wall in desired position, pushing and rubbing over entire panel area with the soft cloth to ensure a nice tight adhesion.

You may like to make up a brace of some sort to help push the panels into place whilst the glue is going off, also the use of some small tacks along the edges of the panel that will be overlapped, while also rubbing over the area around every 10mins while waiting for the glue to set.

**STEP 5.** Continue in the same fashion with your next panels, running a bead of silicon along the edges of the panels, overlapping joints as you go along and up the walls. Joints will require a Sealed pop rivet to secure in place, these can then be touched up to match powder coat colour at a later stage.



**STEP 6.** As you install your top panels ensure to leave the top edge loose to allow the border

to be slipped in behind the panel to cap it off. This then needs to be riveted along the entire length of the panel and border to fix these in place. Silicon can then be used along all edged to ensure everything is water tight, including the edge along the floor.

**STEP 7.** You are now ready to touch up those rivet heads and the job is complete.

